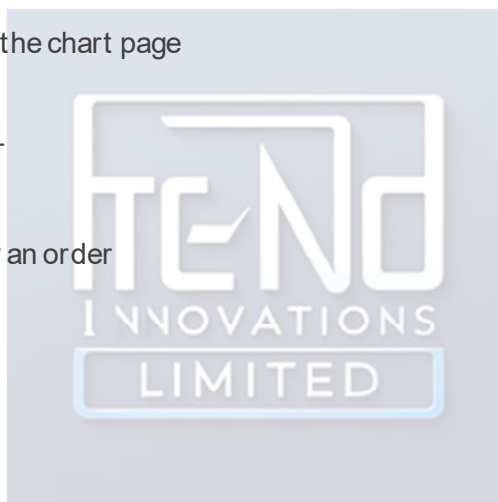


INDEX

02	1. Installation of the app
02	2. Login to your Techno Innovations account
04	3. Quotes page
04	a. Adding financial instruments to the quotes list
05	b. Editing the quotes list
07	c. Managing options on the page Quotes
08	4. Chart page
08	a. Operational chart buttons
09	b. Indicators
11	c. Chart settings
12	d. Managing options on the chart page
13	5. Trade page
13	a. How to place an order
17	b. Order list
18	c. How to close / modify an order
19	6. History page
20	7. Settings
20	a. Accounts
21	b. Charts
22	c. Journal



1. INSTALLATION OF THE APP

In the App Store of your iPhone search for Meta Trader 4, download and install the application. The icon of the app will appear on your screen.



2. LOGIN TO YOUR TECHNO INNOVATIONS ACCOUNT

To open the application, simply click on the icon.



You will be presented with two options you can either log in to an existing account or open a free demonstrational account.



Please always choose the first option Login with existing account!

NOTE

You cannot open a demo account by Techno Innovations via the mobile application. If you sign up for a demo account directly from the mobile platform, you will not receive Techno Innovations pricing, leverage, or available instruments. It will not be a Techno Innovations demo account, but rather a generic overview of MetaTrader 4 for the smart phone.

PLEASE DO NOT USE THE OPTION OPEN A DEMO ACCOUNT.

You can open a demo account only via the desktop platform of Techno Innovations or you can receive login details from our customer support under support@technoinnovationsltd.com

Once you have selected **Log into an existing account**, you have

to select the server that you wish to connect to. Type in the **Search** field **TECHNO** and you will be presented with our two servers to connect to.

To connect to your Demo account, select the **TECHNO-Demo** server.

To connect to your Live account, select the **TECHNO-Live** server.

On the next step you will be directed to the **Login** page.

Please fill in your **TECHNO** account number and password.

If you turn the box **Save password** to **ON**, you will save your login credentials, so that you do not have to enter them each time you open the application.

However, if the box is left un-ticked, then you will have to enter your login and password every time you want to login to your account.

When you have entered your login details, click on the **Sign in** button.

Upon successful login, you will enter the **Quotes** page. On the bottom of the screen are located the 5 main Control Tabs that you will use to manage your account.

Those 5 Tabs are:

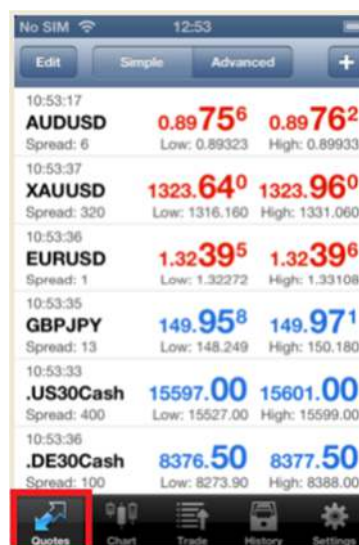
1. Quotes
2. Chart
3. Trades
4. History
5. Settings



3. QUOTES PAGE

Upon successful login, you will see the **Quotes** screen.

Alternatively select the **Quotes** tab to view the quotes section of the platform.



A. ADDING FINANCIAL INSTRUMENTS TO THE QUOTES LIST

To add more financial instruments to your Quotes list, select the **+** button at the top left corner of the page. Another page named Add Symbol will appear. Here you will see instrument's groups listed.

Please find below the content of each group:

FX - all tradable currencies

Equities.UK - LSE Equity CFDs

Equities.EU - European Equity CFDs

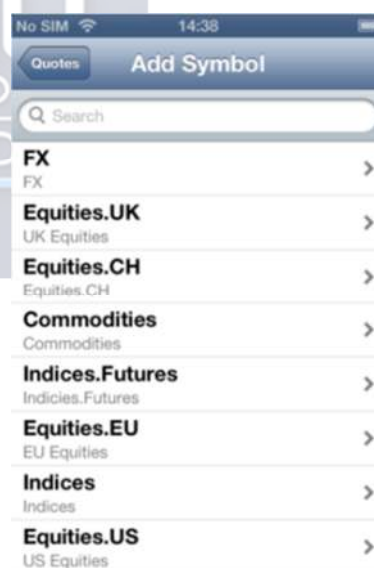
Equities.US - American Equity CFDs

Equities.CH - Swiss Equity CFDs

Bonds.Futures - bonds




Commodities - WTI, Brent Crude Oil and other commodities


Indices - Indices



When you tap on a certain instrument group (for example **FX**) you will see all the instruments from that group offered by us.



For every tradable instrument listed a blue arrow  is located on the right and a green plus button  on the left. If you select  you can see the symbol information for that particular instrument (spread, digits, stops level, tick size etc.).

By selecting the  button, the specific instrument will be removed from its group's list and it will be added to the **Quotes** list.

When you have added all the instruments you want to trade, click on the button **done** located on the top right corner and you will be directed back to the **Quotes** page.



NOTE

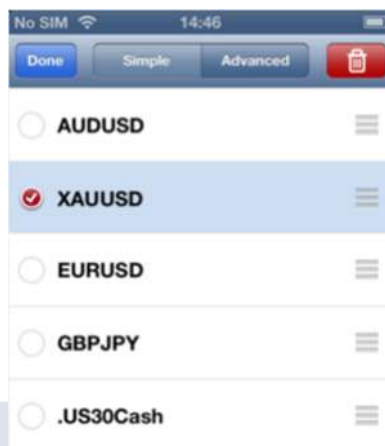
We do not recommend opening more than 50 financial instruments in the **Quotes** list as this may slow down the operation of the app.

B. EDITING THE QUOTES LIST

At the top of the Quotes page, you will see three options: **Edit**, **Simple** and **Advanced**.



By selecting the **Edit** button you can rearrange the order in which the instruments appear in the **Quotes** list. Tap on the symbol you want to move so that the red tick sign  on its left appears, then hold your finger over the button  on the right and move the symbol up or down in the list. When you click on the **Trash** button you will delete the symbol from the **Quotes** list.



The quotes can be displayed in an **Advanced Mode** or in the default **Simple Mode**.

By selecting the **Advanced Mode** option you can see the spreads /shown in pipettes/, the time when the prices were last updated, and High and Low price levels.

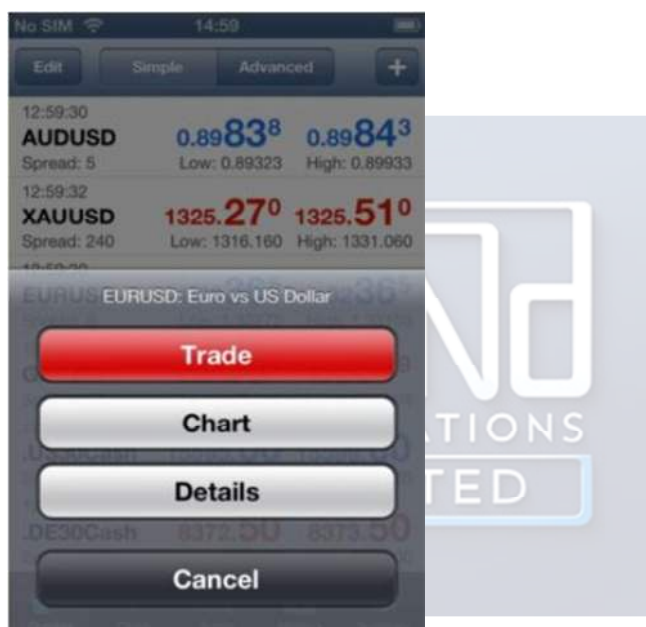
In contrast to the **Advanced Mode**, the **Simple Mode** displays only the ask and bid price, without high and low price levels, spreads and time of updating.

12:57:02	XAUUSD	1325.37⁰	1325.62⁰
	Spread: 250	Low: 1316.160	High: 1331.060
12:57:05	EURUSD	1.3240⁸	1.3241⁰
	Spread: 2	Low: 1.32272	High: 1.33108
12:57:03	GBPJPY	150.33⁷	150.34⁶
	Spread: 9	Low: 148.249	High: 150.504
12:57:05	.US30Cash	15596.00	15600.00
	Spread: 400	Low: 15527.00	High: 15602.00

C. MANAGING OPTIONS ON THE QUOTES PAGE

When you tap on any of the tradable instruments from the **Quotes** list, a pop up box will appear with the following 4 options:

- **Trade** – select this option to open a new position and place a trade for the desired instrument.
- **Chart** – this option will bring up a chart for the selected instrument.
- **Details** – this option will show you all the parameters of the currency pair you have selected.
- **Cancel** – you will be directed to the screen with the quotes.



4. CHART PAGE

You can access the Chart page by clicking on the **Chart** tab at the bottom of the screen.

The **Chart** page of the mobile platform will always show the current instrument you have selected.

A. OPERATIONAL CHART BUTTONS

Depending on how you hold the device (Horizontal or Vertical) the layout of the chart options will be different.



To switch the time frame of the chart, simply select the button with the desired time frame located at the top of the **Chart** page.



You have 9 different time intervals (Periodicity) to choose from:

- M1 – one minute chart,
- M5 – five minutes chart
- M15- fifteen minutes chart
- M30 – thirty minutes chart
- H1 – one hour chart
- H4 – four hours chart
- D1 – daily chart
- W1 – weekly chart
- MN1 – monthly chart

Furthermore, you also have the possibility to change the chart type from Bar chart, to Candle and Line Chart. To do this, tap one of the following buttons:



You can zoom in or zoom out the chart by holding both your forefinger and your thumb on the screen and pinching to zoom in and out.

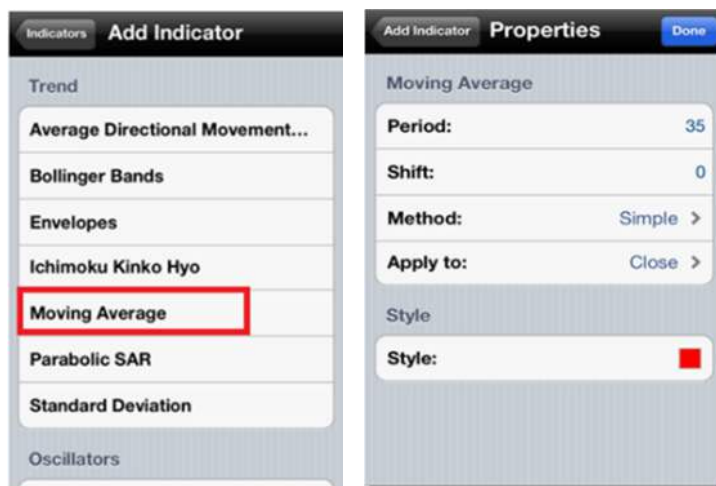


B. INDICATORS


By selecting the **Indicators** button, the page **Indicators** will appear. To add an indicator, click the plus button  .




A list of all available indicators will appear. Tap on the desired indicator, for example **Moving Average** to open its properties window like shown below. The properties of an Indicator may be altered to your own preference.



To confirm your properties and go back to the chart, select **Done**.

To add another **Indicator** to your chart open the Indicator window again and add another indicator by clicking on the **plus** button .

To remove an Indicator from your Chart, select the **Edit** button. A new page will appear where you have to click on the minus button  next to the relevant indicator. The button **Delete** will appear. Select the **Delete** button and then confirm by selecting **Done**.



C. CHART SETTINGS

You can open the chart settings window by clicking on the **Settings** button on the top right corner of the chart. Here you can turn On and Off the Volumes, the Trade levels, the Open/High/Low/Close rates and the Data window.

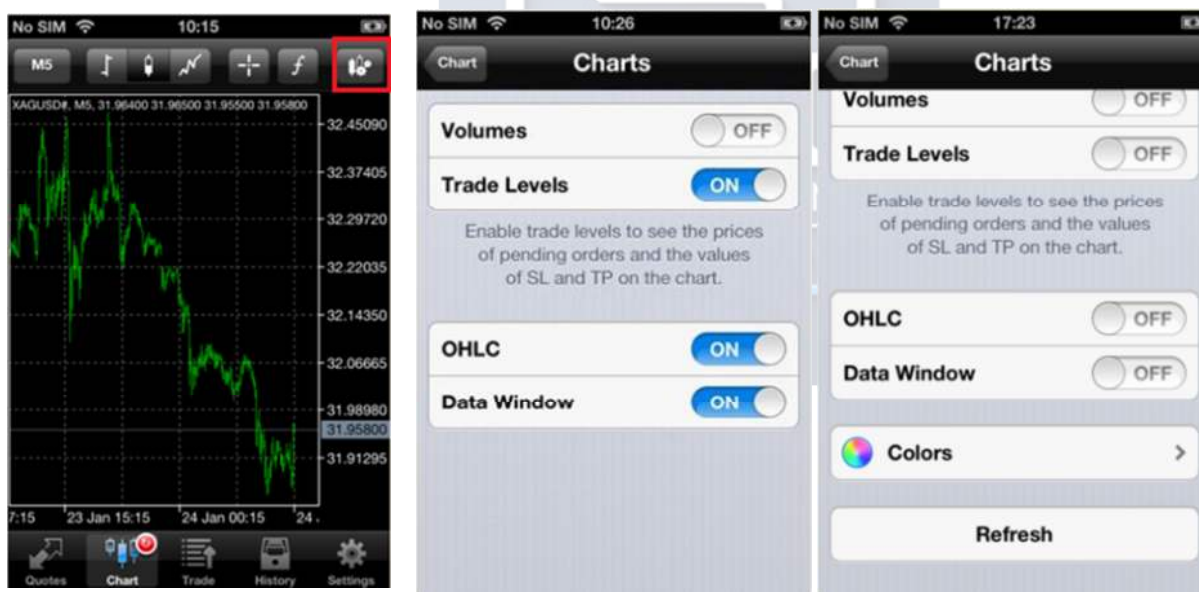
When **Trade Levels** is enabled, all open positions and pending orders of a symbol are shown on the symbol chart. The trade operations are displayed as lines with signatures at the level, at which they were executed.

The function **OHLC** displays open, high, low and close price for the relevant chart period.

By choosing **on** or **off**, you can make visible (on the upper part of the chart) or hide these levels.

With the function **Data Window** you can hide or show the Symbol data that are displayed on the top of the chart.

With the function **Colors** you can change the background color of the chart, the candles colors, the color of the trade level lines etc.



D. MANAGING OPTIONS ON THE CHART PAGE

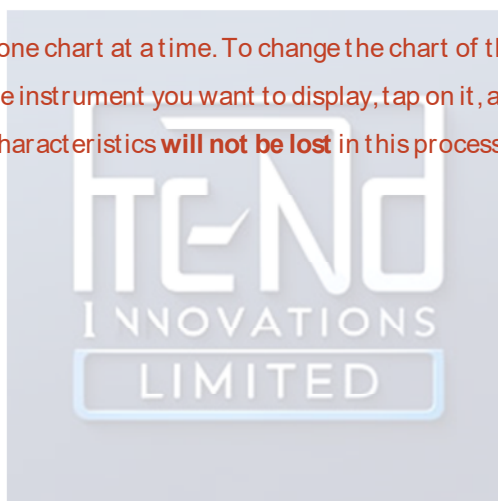
By clicking in the chart, a pop up box with the following four options will appear.

- **Trade** – you can place a trade for the instrument which chart is open
- **Indicators** – you can manage your indicators as described above
- **Settings** – you can manage the chart settings as described above
- **Cancel** – you can close the pop up box

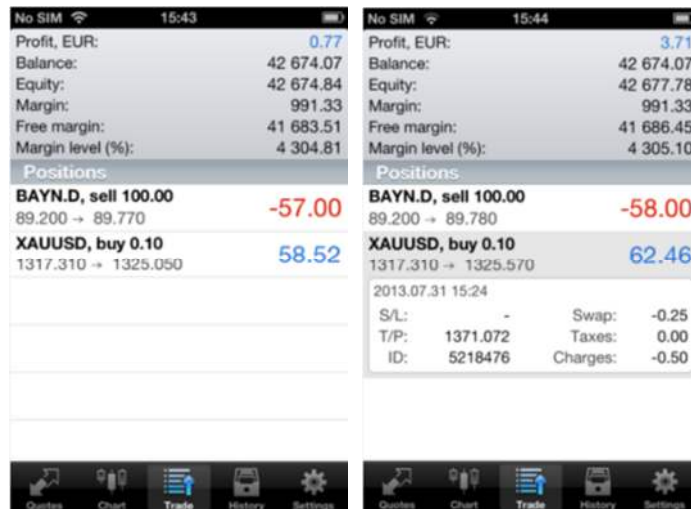


NOTE

Note: The MT4 app can only open one chart at a time. To change the chart of the CFD or currency pair, simply go back to Quote, choose the instrument you want to display, tap on it, and in the action menu tap on **Chart**. Your customized chart characteristics **will not be lost** in this process.



5. TRADE PAGE



The **Trade** Tab can be referred to as Terminal; similar as to the MT4 PC. Here you can see your account balance, equity, margin, free margin, margin level, as well as all open Positions and Pending orders. When tapping with your finger on a position from the **Positions** list you can see its parameters (Stop loss, Take profit, Swap costs etc.).

A. HOW TO OPEN A TRADE

You can open a trade when tapping on a financial instrument in the **Quotes** page or when tapping in the chart of a certain instrument in the **Chart** page and then selecting the option **Trade** from the pop-up menu, as shown below.



A Trading page will appear where you can set the order parameters for a preferred instrument. Here you can choose the instrument, the volume and the type of order you wish to place (market order, or pending order).

On this page there are 2 columns. The first column shows all instruments that you have opened in the **Quotes** list. In the second column there are listed the order types.

To place a trade, match the instrument you want to trade with the type of order you want to place, as shown to the right.

For example, if you want to place a EUR/USD market order, then you have to place both the **EURUSD** symbol and the order type **Market Execution** in the grey bar area.

To do this, scroll up or down through each column until you reach the selected







You have the option of placing the following order types:

1. **Market Execution:** A buy or sell order that is executed at the market price.
2. **Buy limit:** A pending order to open a buy position with an entry price below the current market price.
3. **Buy Stop:** A pending order to open a buy position with an entry price above the current market price.
4. **Sell Stop:** A pending order to open a sell position with an entry price below the current market price.
5. **Sell Limit:** A pending order to open a sell position with an entry price above the current market price.

Once you have the correct match, select the volume of the order you wish to place from the field **Volume**.

To select the volume for your trade, either select the **arrow** buttons next to the **Volume** entry field in the relevant direction, or tap on the **Volume** entry field - an on-screen keyboard will appear which allows you to manually enter the number.



The  or  buttons will raise or lower the volume being traded by 0.05 lots (5,000 units of currency). Meanwhile the  and  buttons will raise or lower the volume by five micro lots (5,000) units of currency.

Once you have set the parameters of your trade, hit the **Next** button at the top right hand corner of the **Trade** page.

NOTE

By some financial instruments (stocks, indices, commodities) the minimum order volume is 1. Please consider the instrument you are trading and enter an acceptable quantity for the relevant instrument.

If you want to place a **Market Execution** order that will be executed immediately at the current market price you will be presented with a page displaying the current Bid and Ask prices.

From here, either select the red Sell button or the blue Buy button for the specified financial instrument.



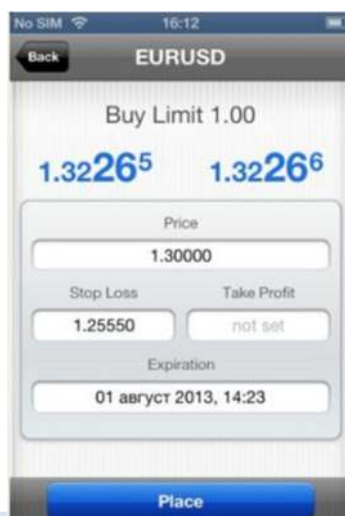
ADDRESS

Techno Innovations LTD
7 Strazhitsa str, Sofia- 1220, Bulgaria.

WEB

support@technoinnovationsltd.com
www.technoinnovationsltd.com

If you have selected one of the four **Pending Order** types on the next page that will appear you can set the entry price, the stop loss and the take profit levels.



To enter an execution price, select the **Price** entry field. An on-screen keyboard will appear so that you can manually enter the price at which you want your order to be executed.

To enter a Stop Loss and Take Profit, select the relevant fields and the on-screen keyboard will appear again where you will then be able to enter the values you desire.

Alternatively, select the tabs **Previous** or **Next** on the on-screen keyboard. To move your price up or down by one pip select the + or - buttons.

Once you have completed setting the prices, select the button **Done** located on the on-screen keyboard.



To add an Expiration for a Pending Order, select the field **Expirations**.

The default setting is GTC (Good till Cancelled) for currency trading. For the other financial instruments, the pending orders expiration depends from the requirements of the exchanges.

NOTE

Please note that the function **Expiration** is disabled on the Live Server mobile application. You cannot place live orders with expiry date.

Once all trading parameters are set, select the Place button and your Pending Order will be placed.

NOTE

If the entry price, the SL or the TP you have entered is not correct, the button **Place** will remain inactive (in grey).

B. ORDER LIST

On the Trade page, below the parameters of your account in the section **Positions** you will see a list of all your open positions. When you select a position, a more detailed overview of that particular trade will be presented to you. This includes Stop Loss and Take Profit levels, the date and time of execution, the ID number for the trade, along with any other additional charges such as swap, taxes or charges for the position.

Account Summary (Left)		Account Summary (Right)	
Profit, EUR:	33.12	Profit, EUR:	30.78
Balance:	42 623.07	Balance:	42 623.07
Equity:	42 656.19	Equity:	42 653.85
Margin:	385.19	Margin:	385.19
Free margin:	42 271.00	Free margin:	42 268.66
Margin level (%):	11 074.11	Margin level (%):	11 073.51

Positions (Left)		Positions (Right)	
.US30Cash, sell 1.00	-9.07	.US30Cash, sell 1.00	-12.09
EURUSD, buy 0.05	-1.85	EURUSD, buy 0.05	-1.93
XAUUSD, buy 0.10	45.64	XAUUSD, buy 0.10	46.40

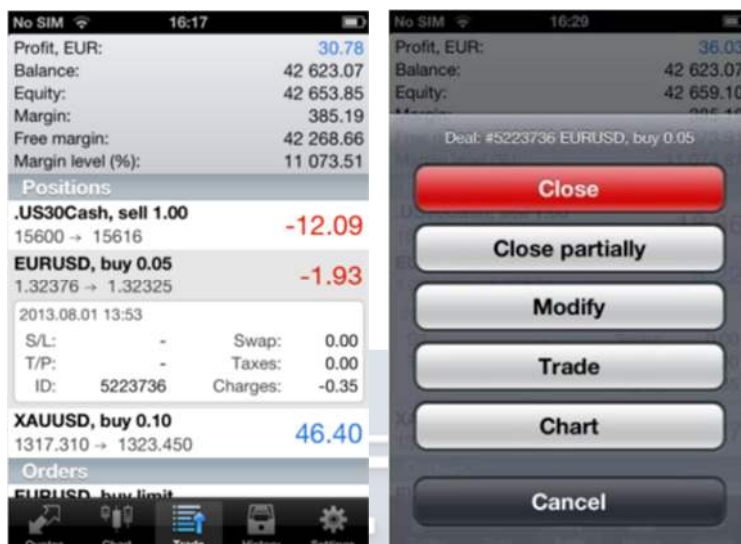
Orders (Left)		Orders (Right)	
EURUSD, buy limit	1.32328	EURUSD, buy limit	1.32328

If you have any pending orders, they will be shown in the **Orders** section of the page, which will appear below the **Positions** section.

Here you will see the instrument, the type of pending order, the volume, desired entry price, and then the current spot price of the . To view all the parameters of the pending order, please tap on it.

C. HOW TO MODIFY/ CLOSE AN ORDER

To close an open position or modify/ add a stop loss or take profit, tap on the order you want to close. The Trade Info Box will pop/open below the trade, containing all information about the individual position. Inside this box, **tap and hold your finger** for a few seconds until the optional menu opens. At this point you will be able to modify or close open positions.



The pop-up menu contains the following options:

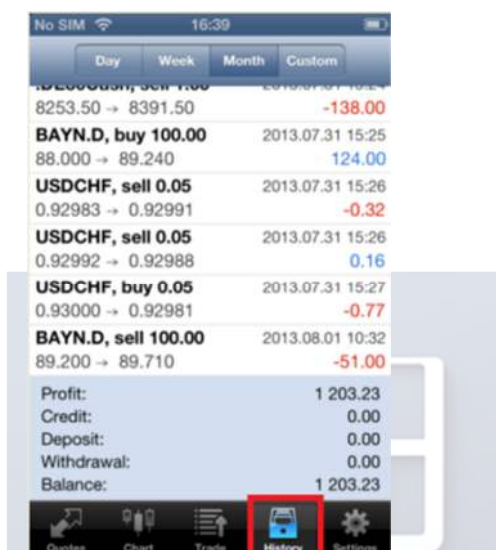
1. **Close** - to close your order at the market price.
2. **Modify** – to add or modify your stop loss and take profit.
3. **Trade** - brings you back to the trade tab to place a new order.
4. **Chart** – brings you back to the chart for the instrument you are trading.
5. **Cancel** – Closes the pop up box.

6. HISTORY PAGE

The **History** page enables you to view your trading history.

To choose the time period for your history report, select the preferred option from the menu bar at the top of the **History** page. Choose from one of the following options: **Day**, **Week**, **Month** or **Custom**.

E.g. by selecting the **Month** option, you can view all trades that were closed out for the month as well as an overview of the profit/loss, withdrawals, deposits, balance and credit for the chosen time period.



The option **Custom** enables you to select the time period of your choice. Simply enter the dates into the field at the top of the page, as shown below:




In the mobile app you have the possibility to filter all the trades based on their symbol. Simply type the instrument you are looking for in the search field (e.g. BAYN.D) and the App will list all the trades you have entered under the search criteria.

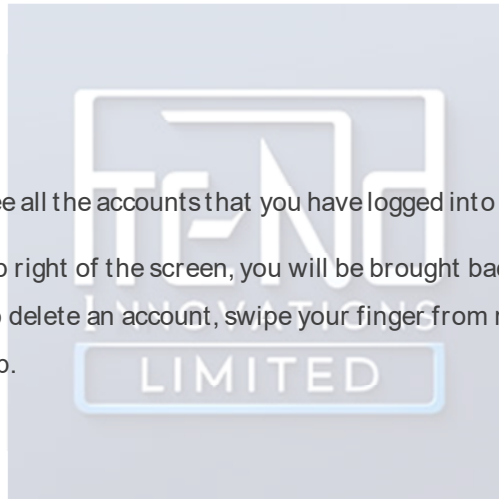
7. SETTINGS

The **Settings** page allows you to adjust various parameters of the MetaTrader 4 for iPhone.

A. ACCOUNTS

In the **Accounts** section you can see all the accounts that you have logged into from your device.

By selecting the  tab at the top right of the screen, you will be brought back to the login page, where you can login to a new account. To delete an account, swipe your finger from right to left on the account and a red **Delete** button will pop up.



The live account you are currently logged into appears on yellow background. On the top of the page you can see the parameters of the current connection:

- **Traffic**—amount of incoming and outgoing traffic for the current session
- **Server**—the name of the server, to which the mobile terminal is currently connected

PAGE 20

ADDRESS

Techno Innovations LTD
7 Strazhitsa str, Sofia- 1220, Bulgaria.

WEB

support@technoinnovationsltd.com
www.technoinnovationsltd.com

- **Access point** —the name of the access point, through which the terminal is currently connected to a server.



B. CHARTS

By selecting the **Charts** section you will be able to customize your chart as described in chapter 2.c. of that manual



C. JOURNAL

By selecting the **Journal** section you can see the trade logs. The log files contain records of all actions which are done through the application. You can page through the dates by means of the arrows at the bottom of the page.

