



USERGUIDE

MT4+ SESSION MAP



ADDRESS

Techno Innovations LTD
7 Strazhitsa str, Sofia- 1220, Bulgaria.

WEB

support@technoinnovationsltd.com
www.technoinnovationsltd.com

INDEX

02	1. SESSION MAP
02	a. News markers
03	b. Floating P/L, account information, and colour-coding
04	c. Session bars



ADDRESS

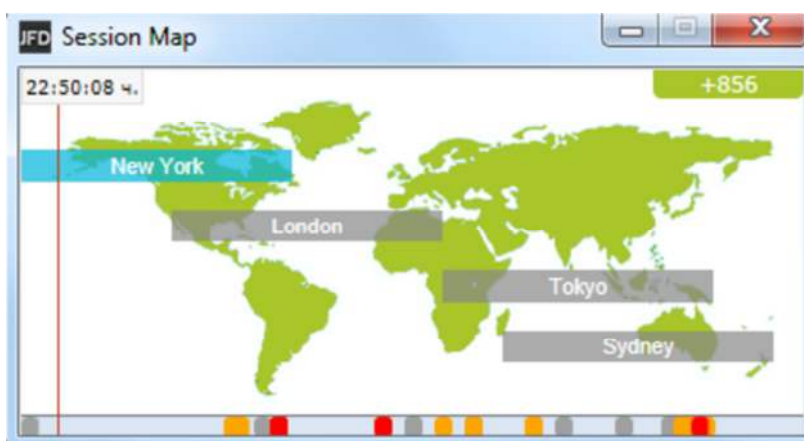
Techno Innovations LTD
7 Strazhitsa str, Sofia- 1220, Bulgaria.

WEB

support@technoinnovationsltd.com
www.technoinnovationsltd.com

1. SESSION MAP

The **Session Map** shows your current local time in relation to sessions during the trading day, i.e. the core trading hours when institutional dealers are most active in Sydney, Tokyo, London and New York.



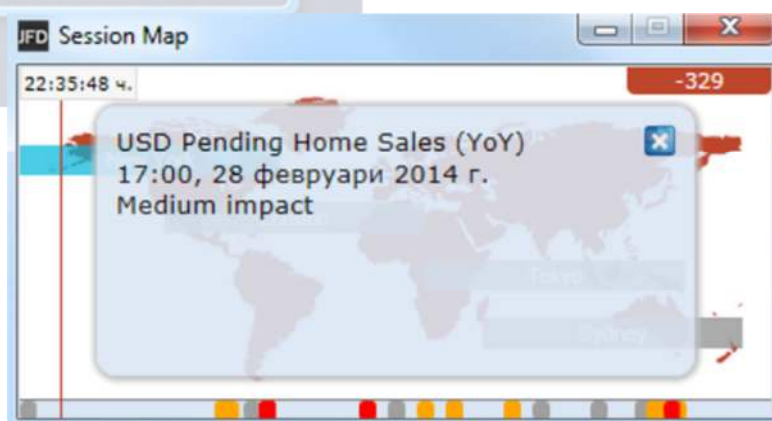
The **Session Map** also shows markers for future news events; information about your floating P/L and equity; and price activity during each session.

PLEASE NOTE: the current time is taken from your computer clock, and its accuracy depends on your computer clock being accurate.

a. News markers

The **bar** at the bottom of the map shows markers for future news events, e.g. non-farm payroll. (Items to the right of the current time are not in the past: they are a long way into the future.)

Each marker is colour-coded to indicate its importance: red for **high-impact events**; orange for **medium**; and grey for **low**.



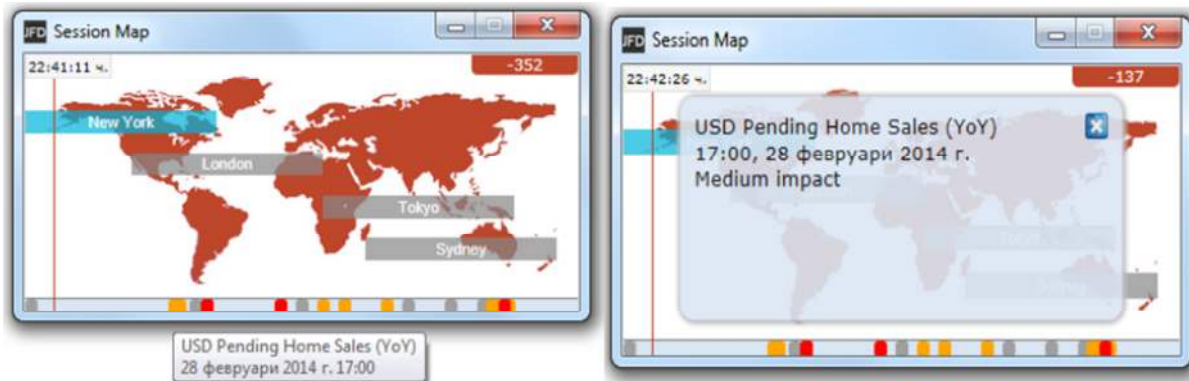
ADDRESS

Techno Innovations LTD
7 Strazhitsa str, Sofia- 1220, Bulgaria.

WEB

support@technoinnovationsltd.com
www.technoinnovationsltd.com

You can hover the mouse over a marker to display a tooltip showing what the event is, and you can click on a marker to see that text in full. For example:



b. Floating P/L, account information, and colour-coding

The box at the top of the map shows the **current floating P/L** on your account (if any).



The map is color-coded depending on the **floating P/L**: **green** for profit; **red** for loss; **grey** if no open position.

You can get a summary of your account by clicking on the **P/L box**. For example:



c. Session bars

If you hover the mouse over a **session bar** such as “New York”, you will see a tooltip showing the current local time in New York and how long it is until core trading opens or closes in that region.



You can also click on a **session bar** to show a summary of price action for major symbols during that session. The following example shows the most recent trading in Tokyo. EURUSD rise 46.7 pips during the session, with a trading range of 75.3 pips, closing at 1.3706.



PLEASE NOTE: The prices used in the Session Map are an average of multiple brokers and may differ very slightly from the prices displayed by Techno Innovations.