

USERGUIDE

MT4+ SENTIMENT TRADER



ADDRESS

Techno Innovations LTD
7 Strazhitsa str, Sofia- 1220, Bulgaria.

WEB

support@technoinnovationsltd.com
www.technoinnovationsltd.com

INDEX

02	1. ABOUT SENTIMENT DATA
02	2. USING THE SENTIMENT TRADER
03	a. Changing the display of current sentiment
03	b. Changing the display of historic sentiment
04	c. Current open position
04	d. Switching between symbols
04	e. Opening and closing positions



ADDRESS

Techno Innovations LTD
7 Strazhitsa str, Sofia- 1220, Bulgaria.

WEB

support@technoinnovationsltd.com
www.technoinnovationsltd.com

1. ABOUT SENTIMENT DATA

The **Sentiment Trader** displays information about current and historic long/short sentiment: the percentage of traders who currently have (or had) an open buy or sell position in a symbol.

The figures are *not* technical analysis based on price action. They are calculated from real-money accounts which are being published to www.mt4i.com. For example:

- 5845 real-money accounts publishing to www.mt4i.com have an open buy position in EURUSD, and 2378 accounts have an open sell position. The app will show that the EURUSD sentiment is 71% long.

The list of available symbols is determined by popularity, i.e. the number of people trading them. For example, sentiment data is not available for CADJPY because there are typically too few traders with an open position to calculate a meaningful percentage.

If a trader has multiple open orders in the same symbol, then the sentiment calculation uses a single net figure for the trader's positions. For example, if a trader has an open buy order for 1.5 lots and an open sell order for 0.7 lots, then they are treated as being long.

The sentiment percentage is **not** weighted by volume (because www.mt4i.com has a few users with very large accounts and trade sizes). A trader who is long 0.1 lots has the same effect on the figures as a trader who is long 50 lots.

2. USING THE SENTIMENT TRADER

The **Sentiment Trader** shows the current **long/short sentiment** (30% long in the following example), and a chart of historic sentiment plotted against price action. In the example below, sentiment has remained consistently below 50%, i.e. a majority of traders have been short EURUSD.



PAGE 2

ADDRESS

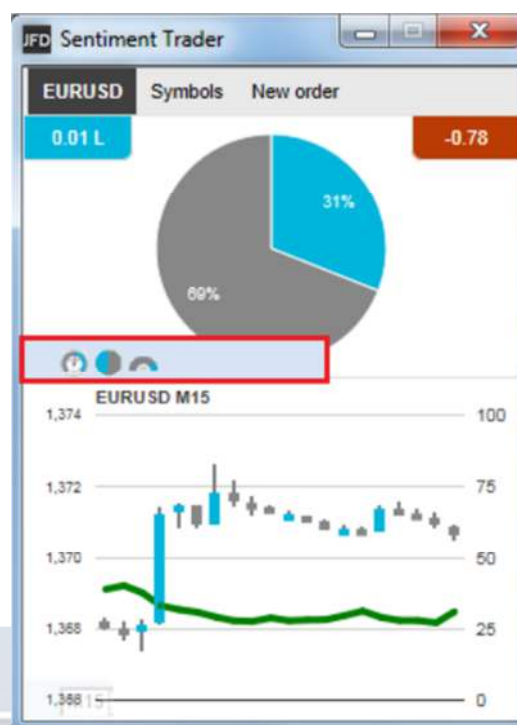
Techno Innovations LTD
7 Strazhitsa str, Sofia- 1220, Bulgaria.

WEB

support@technoinnovationsltd.com
www.technoinnovationsltd.com

a. Changing the display of current sentiment

You can change the way that current sentiment is displayed using the pop-up bar in the bottom-left of the chart. There are three options: a **dial**; a **pie chart** and a **gauge** (the default).



b. Changing the display of historic sentiment

You can change the way that historic sentiment is displayed again using a pop-up bar in the bottom-left of the chart: You can choose the timeframe for the historic chart (e.g. M5, H1), and three different types of chart:

- Price candles vs sentiment (the default)
- A line chart of close prices vs sentiment
- "Sentiment candles": these show the *range* of sentiment values, rather than just the closing value, within each time bar (M5, H1 etc.).



c. Current open position

The boxes at the top of the display show any open position in the selected symbol. In the following example, the trader is long 0.01 lots EURUSD, and the current P/L of that position is a loss on -0.77.



d. Switching between symbols

You can switch between different symbols using the **Symbols** tab at the top of the app.

This displays a list like the example below which shows the symbols; the current long/short sentiment as a bar; any open position which you have in the symbol; and the P/L of the open position.

You can switch the main display to a different symbol by clicking on its name in this list.

Symbol	Long %	Short %	Position	P/L
AUDNZD	50%	50%	-	-
AUDUSD	50%	50%	-	-
EURCHF	50%	50%	5.00 L	-85.02
EURGBP	50%	50%	-	-
EURJPY	50%	50%	5.00 S	+646
EURUSD	50%	50%	0.01 L	-0.69
GBPUSD	50%	50%	-	-
NZDUSD	50%	50%	-	-
USDCAD	50%	50%	-	-
USDCHF	50%	50%	-	-
USDJPY	50%	50%	-	-

e. Opening and closing positions

You can use the **New Order** to carry out simple trading actions such as closing an open position or opening a new one.

The top of the trading form shows any open position in the selected symbol, and the button **Close** closes all open positions in the selected symbol you have at the moment.

On the right there is a simple form for placing a new buy or sell market order.

Symbol	Volume	Floating P/L	Action
EURUSD	0.01 L	-0.63	Close

EURUSD

Volume: lots

S/L: pips

T/P: pips

☐ Non-hedging mode (sells close buys, and vice versa)

Sell 1.37078 **Buy** 1.37079