

USERGUIDE

MT4+ MARKET MANAGER



ADDRESS

Techno Innovations LTD
7 Strazhitsa str, Sofia- 1220, Bulgaria.

WEB

support@technoinnovationsltd.com
www.technoinnovationsltd.com

INDEX

02	1. MARKET MANAGER
02	2. CHOOSING THE SYMBOLS TO DISPLAY
03	3. TRADING FROM THE MARKET MANAGER
03	a. Placing orders
04	b. Quick trade-entry from templates
04	c. Closing the entire position for a symbol
05	4. ACCOUNT INFORMATION
06	5. ORDER LIST
07	6. ORDER WINDOWS
07	a. Information about s/l and t/p
08	b. Changing stop-losses etc
09	7. POP-UP SYMBOL WINDOWS
09	a. Symbol information
10	b. Trading from the pop-up symbol window
10	8. POP-UP MENU FOR SYMBOLS
11	a. New-chart option on MT4



ADDRESS

Techno Innovations LTD
7 Strazhitsa str, Sofia- 1220, Bulgaria.

WEB

support@technoinnovationsltd.com
www.technoinnovationsltd.com

1. MARKET MANAGER

The **Market Manager** does four main things:

- It shows a “watch list” of both symbol prices and open positions, with facilities for closing positions and opening new ones
- It displays headline information about the account, such as equity, balance, and margin usage.
- You can view a list of all open tickets, i.e. all open positions and pending orders, with the ability to open each ticket as a separate window, and then modify or close the position or order.
- It provides a concise summary of recent price activity on a symbol

2. CHOOSING THE SYMBOLS TO DISPLAY

On MT4 the list of symbols in the Market Manager synchronises with the MT4 market watch. You configure the symbols in the **Market Manager** by configuring the MT4 market watch.

The screenshot shows the MT4 Market Manager window. It contains a table with the following data:

Symbol	Bid	Ask	Time
XAGUSD	21.3380	21.3530	17:24
XAUUSD	1333.480	1333.710	17:24
CHFJPY	115.032	115.042	17:24
EURUSD	1.37154	1.37154	17:24
.US30Cash	16233	16234	17:24
.HKCash	22765.00	22773.00	14:59
.US30CashNY	16233.00	16234.00	17:24
AC.P	36.275	36.295	16:29
DIA.L	162.10	162.11	17:24
EWV.L	60.30	60.35	17:24
EURJPY	140.034	140.044	17:24
.BrentCrud	108.78	108.82	17:24

Symbol	Bid	Ask	Lots	Profit
XAGUSD	21.3380	21.3530	-	-
XAUUSD	1333.480	1333.710	-	-
CHFJPY	115.032	115.042	-	-
EURUSD	1.37154	1.37154	+0.01	+0
.US30Cash	16233	16234	-	-
.HKCash	22765.00	22773.00	-	-
.US30CashNY	16233.00	16234.00	-	-
AC.P	36.275	36.295	-	-
DIA.L	162.10	162.11	-	-
EWV.L	60.30	60.35	-	-
EURJPY	140.034	140.044	-5.00	+244
.BrentCrud	108.78	108.82	+2.00	-3

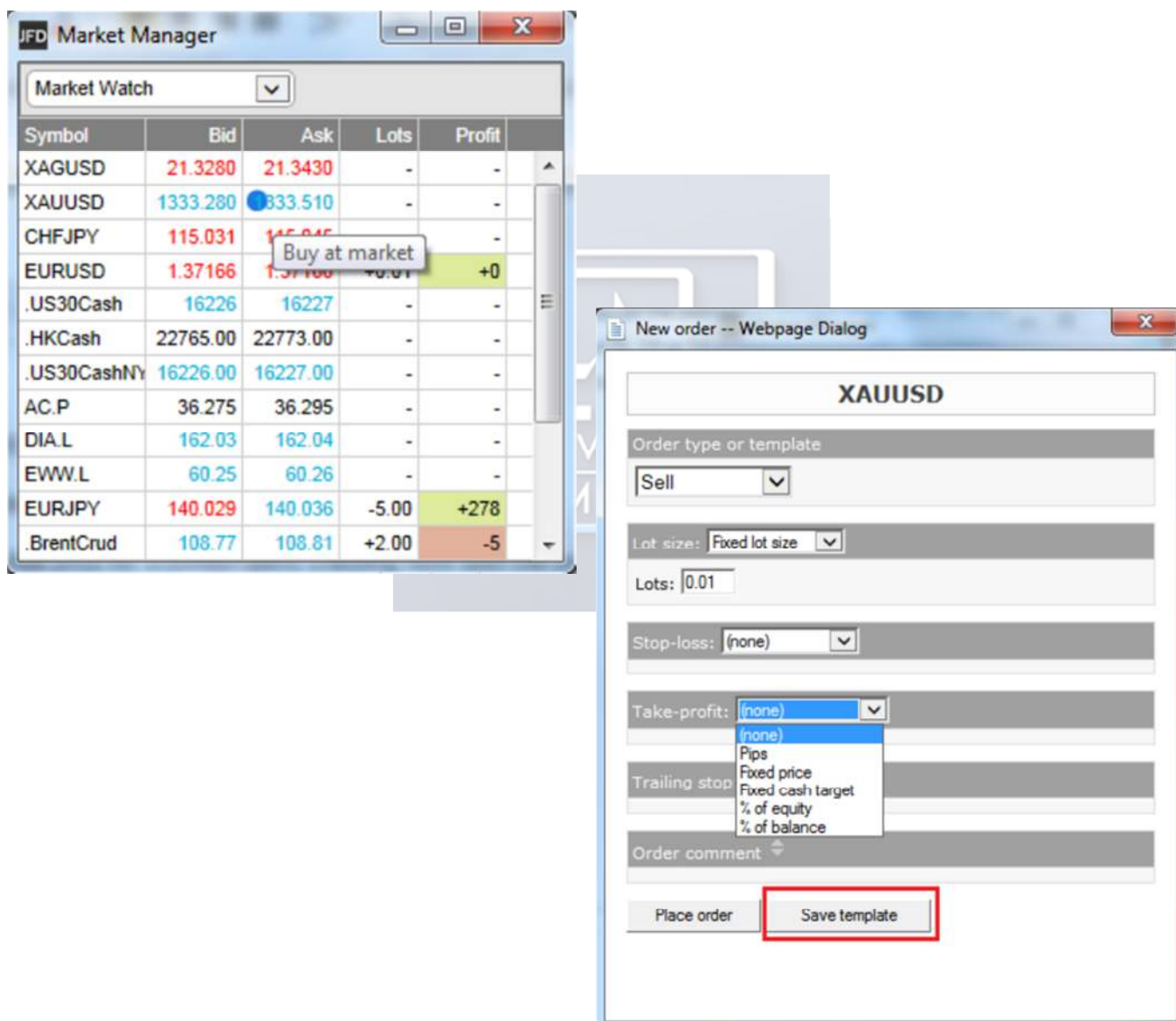
3. TRADING FROM THE MARKET MANAGER

a. Placing orders

Clicking on the **Bid** or **Ask** price for a symbol opens a dealing form with the order-type press to “**buy**” or “**sell**”.

The following **New order** window appears where you can set the parameters of your order.

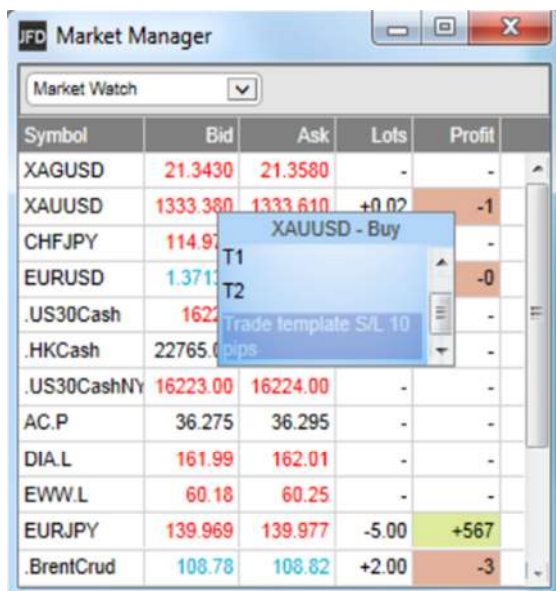
Here you can choose between market and pending orders, you can set SL, TP or Trailing stops on an order. The Option **Save template** gives the possibility to create templates with certain order parameters and to reuse them further.



b. Quick trade-entry from templates

The **Market Manager** shares templates with **Techno Trade Terminal** and **Mini Terminal** apps.

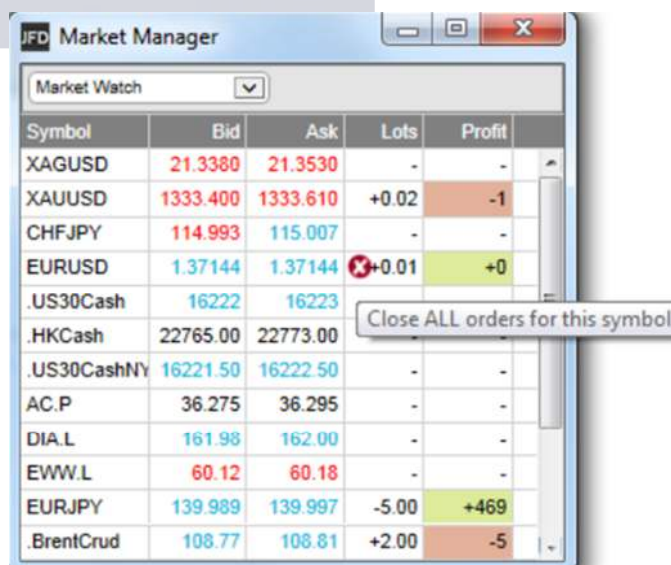
You can quickly execute a template by holding down the **Ctrl** key while clicking on the bid or ask price for a symbol, and then clicking on the template name:



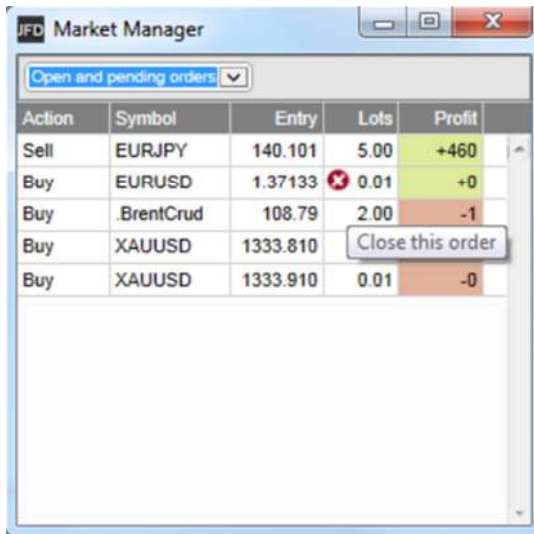
PLEASE NOTE: Templates have an order-type stored as part of their definition. In this context, the order-type is replaced by “buy” or “sell” depending on whether you have clicked on the bid price or the ask price.

c. Closing the entire position for a symbol

You can quickly close all the orders for a symbol by clicking on the position size. While the mouse is over the column, an icon appears next to the volume to indicate this:

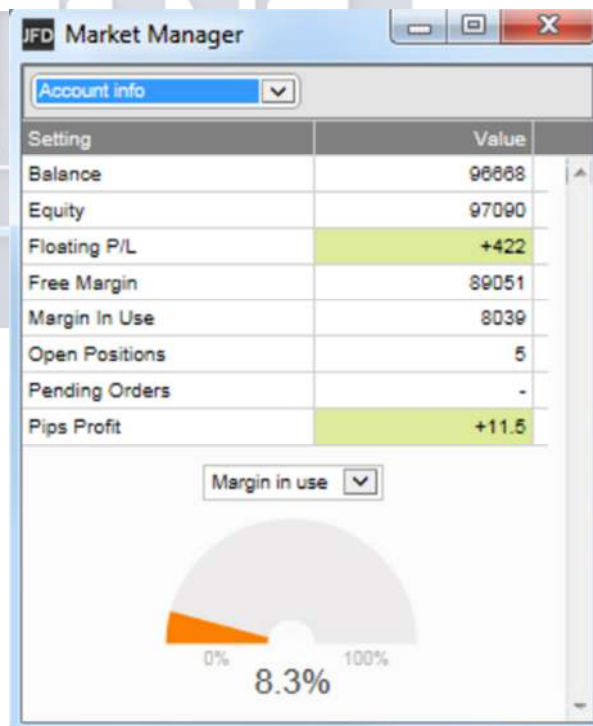


If there are multiple tickets which make up a position, you can close individual tickets using the filter **Open and pending orders** and then close only the desired order.



4. ACCOUNT INFORMATION

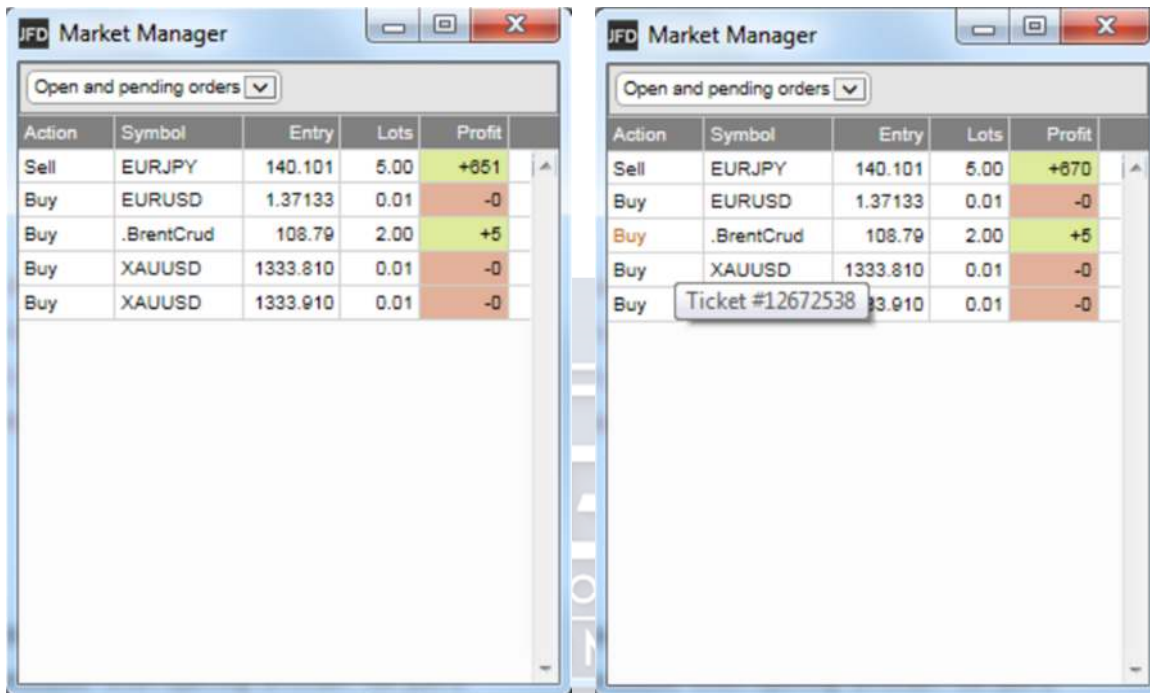
You view information about your account and profitability by choosing the **Account info** option from the drop-down menu. This displays headline values about the account such as balance and free margin, and also shows a choice of three key metrics in graphical form (margin usage, floating P/L, or pips profit).



5. ORDER LIST

The **Open and Pending orders** option in the drop-down menu displays a list of each open ticket on the account, i.e. all open positions and pending orders.

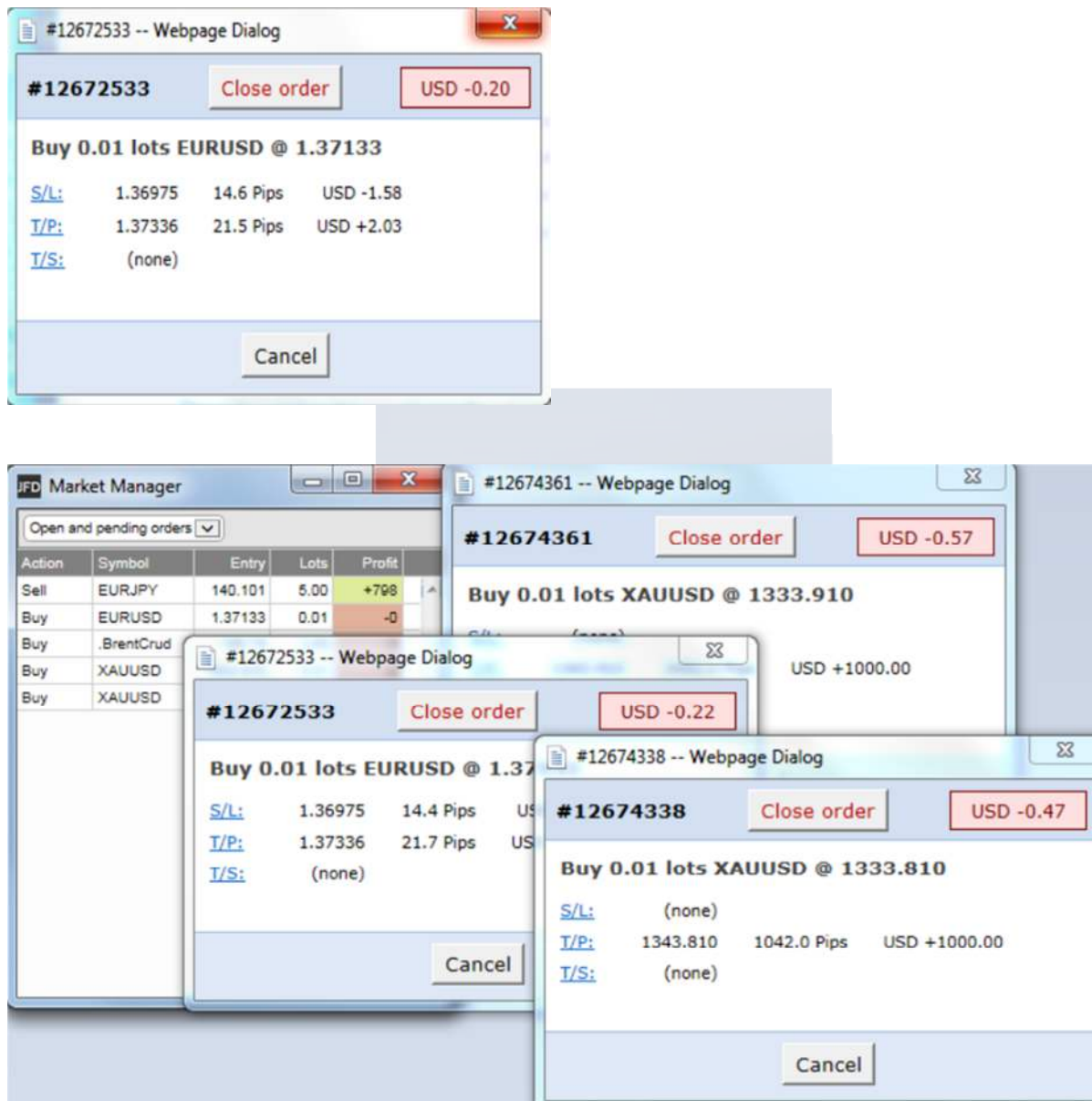
You can close a position or pending order by clicking on its volume, or you can inspect an order and change its details by clicking on the action such as **Buy** or **Sell**. This opens an order window as discussed in the next section.



Action	Symbol	Entry	Lots	Profit
Sell	EURJPY	140.101	5.00	+851
Buy	EURUSD	1.37133	0.01	-0
Buy	.BrentCrud	108.79	2.00	+5
Buy	XAUUSD	1333.810	0.01	-0
Buy	XAUUSD	1333.910	0.01	-0

6. ORDER WINDOWS

Clicking on a ticket's action in the order list opens a pop-up window for that order. You can have any number of these pop-up windows visible at once.



a. Information about s/l and t/p

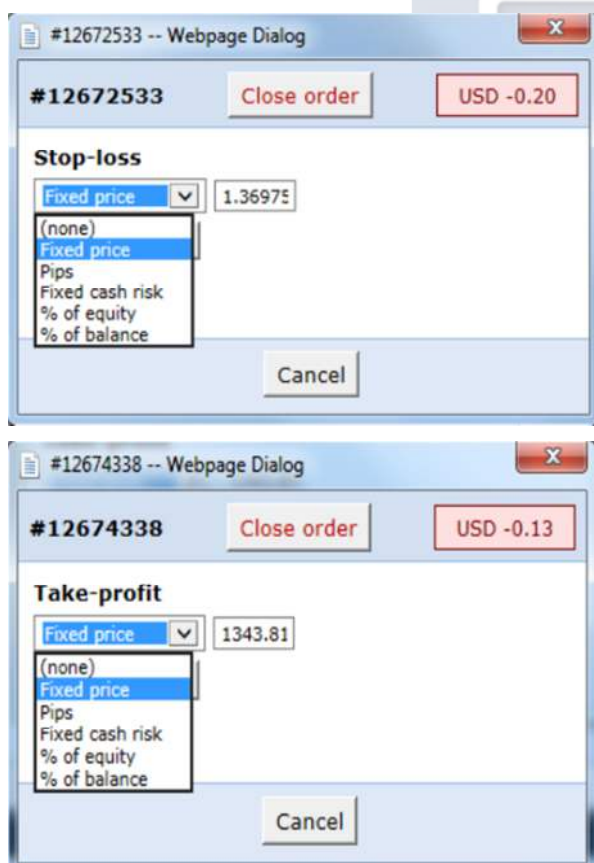
The information shown about the s/l and t/p includes not only the price, but also the distance in pips from the current ask/bid price, and the cash effect on the balance if the s/l

or t/p is hit. (In the example above, the order is substantially in profit and the s/l is in positive territory, i.e. the worst-case result for this order is now a profit, not a loss.)

PLEASE NOTE: When s/l or t/p is set to a value in pips, it is measured from the open/current price. For example, a buy at 1.2345 with s/l of 10 pips will have its s/l set to 1.2335. (In other words, when creating s/l or t/p on an order, pip values are measured from the ask price.) However, the information in the pop-up order window shows how close the s/l and t/p are to being *hit*; the figures are measured from the other side of the spread.

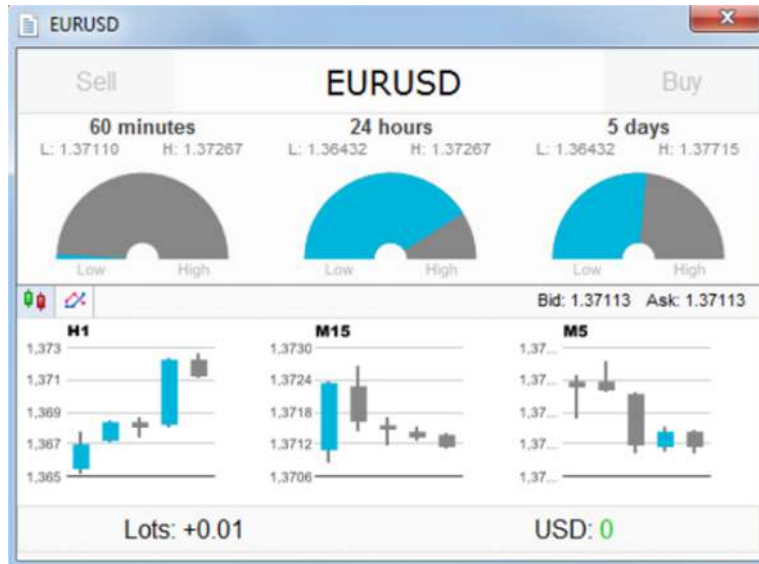
b. Changing stop-losses etc.

The order window lets you change the s/l, t/p or trailing stop as well as just viewing this information. The s/l and t/p can be set using all the same options which are available when opening an order, not just a fixed price or a number of pips. (For example, the stop-loss can be set to a price corresponding to a cash risk of USD 50.)



7. POP-UP SYMBOL WINDOWS

Symbol names in the **Market Manager** act as links for opening a pop-up window showing recent price movements on that symbol. You can open any number of these pop-up symbol windows.

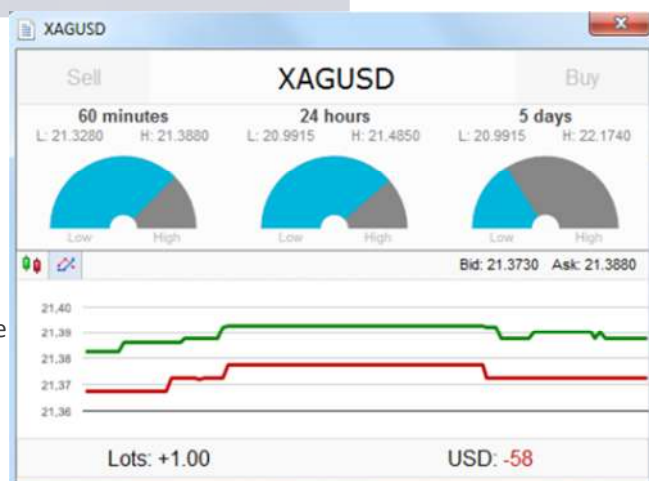


a. Symbol information

The pop-up symbol window shows the following information.


- Current price versus the high-low range over the last 60 minutes, 24 hours, and 5 days.
- Recent H1, M15 and M5 candles.
- The current volume and profitability of any open position in the symbol.

This is drawn from the data in your Techno Innovations trading platform, and there can be a short delay before all the information appears if the historic data needs to be downloaded from the Techno Innovations' servers.



PLEASE NOTE: That the gauge for the last 60 minutes is not the same as the current H1 candle. The former runs from e.g. 10:23am to 11:22am whereas the current H1 candle runs from e.g. 11:00am to 11:22am.

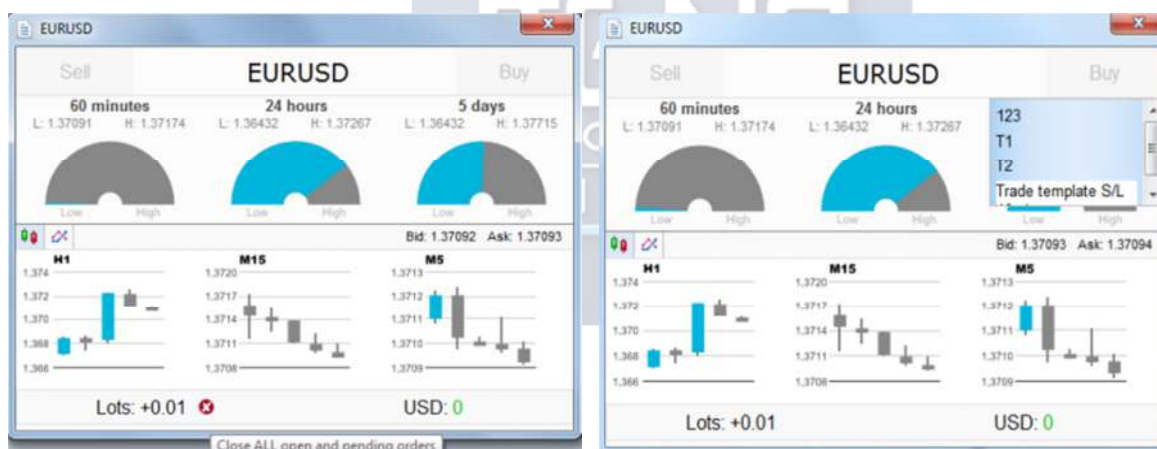
The symbol window can be switched so that it shows very recent price activity instead of

the candles, using the button in the following screen shot . This is *not* a tick chart; it is a 500-millisecond chart which continues updating even if there is no market activity.

b. Trading from the pop-up symbol window

You can carry out three trading actions from the symbol window:

- Close an open position (if any) by clicking on the volume.
- Open the standard dealing form by clicking on the **Buy** and **Sell** buttons in the top-left and top-right corners.
- Quickly execute a saved template by holding down **Ctrl** while clicking on the **Buy** or **Sell** buttons.

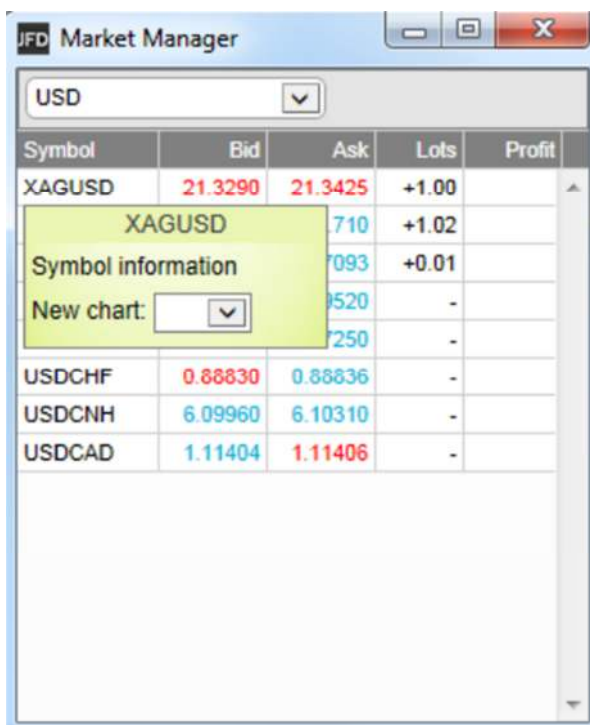


8. POP-UP MENU FOR SYMBOLS

As well as right-clicking on any symbol name in the **Market Manager**, you can also hold down the **Ctrl** key while clicking. This displays a pop-up menu with the following options:

- Symbol information. Same as a simple click on the symbol; opens a pop-up window for that symbol.

- Place order. Opens the standard dealing form.



a. New-chart option on MT4

The pop-up menu contains a **New chart** option which opens a new chart for the selected symbol. If there is a template in MT4 called **Market watch** then this is automatically applied to the new chart. (If not, the default template will be used.)

