

USERGUIDE

MT4+ CONNECT + NEWS TRADING



ADDRESS

Techno Innovations LTD
7 Strazhitsa str, Sofia- 1220, Bulgaria.

WEB

support@technoinnovationsltd.com
www.technoinnovationsltd.com

INDEX

02	1. CONNECT
03	a. Opening the Connect window
04	b. News button and Calendar button



ADDRESS

Techno Innovations LTD
7 Strazhitsa str, Sofia- 1220, Bulgaria.

WEB

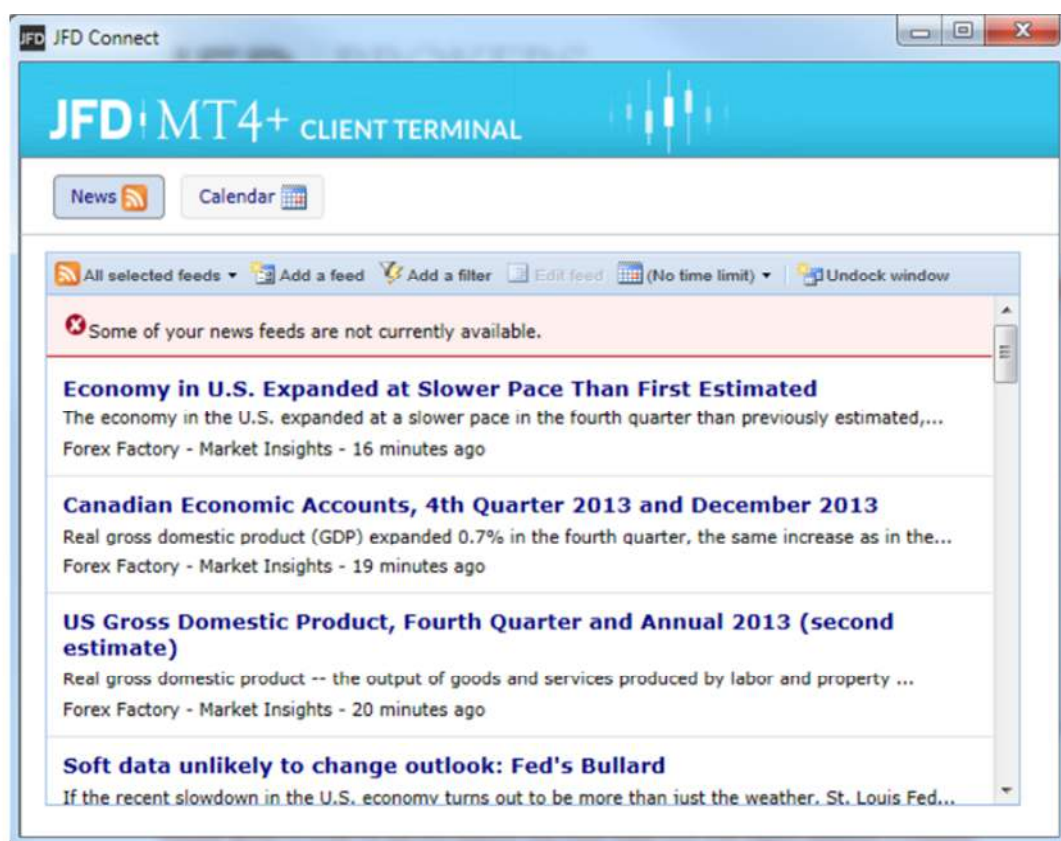
support@technoinnovationsltd.com
www.technoinnovationsltd.com

1. MP – CONNECT

JFD-Connect provides a user-configurable news feed and economic calendar.

Typical key functions:

- Allows traders to select and combine any RSS news feeds, building a personalised news service
- Traders can set filters on the news feeds (e.g. only display articles about GBP/USD) and can set up alarms when new stories are released
- Economic calendar with the ability to set alarms on future events

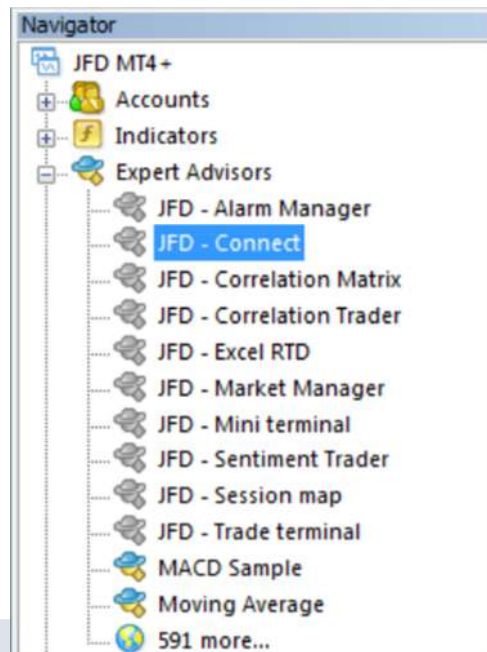


Connect gives traders instant access to a broad range of data while only ever being one click away from trading charts.

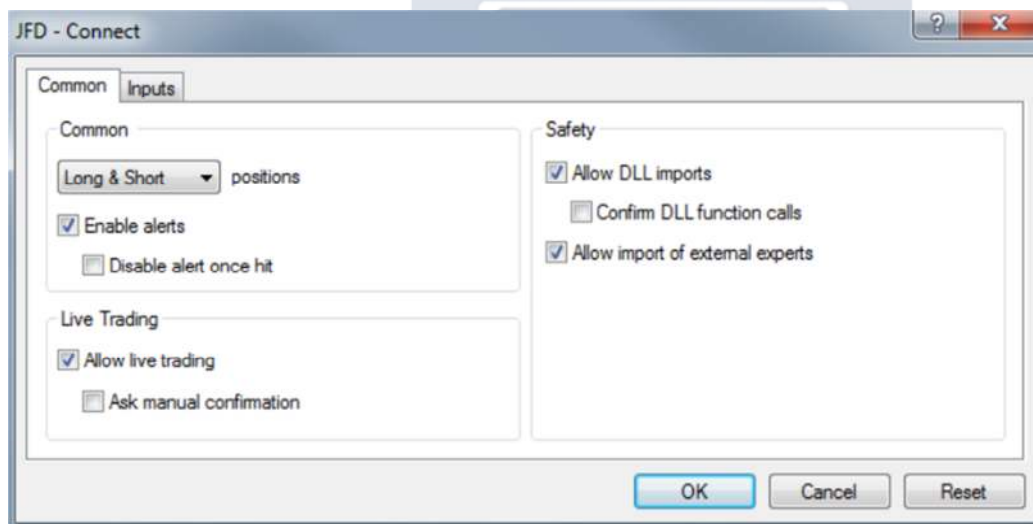
a. Opening the Connect window

This feature can be found in the **Navigator** window under **Expert Advisors**.

Click on **Connect** from the **Expert Advisors** list and without releasing, drag and drop it into a chart.



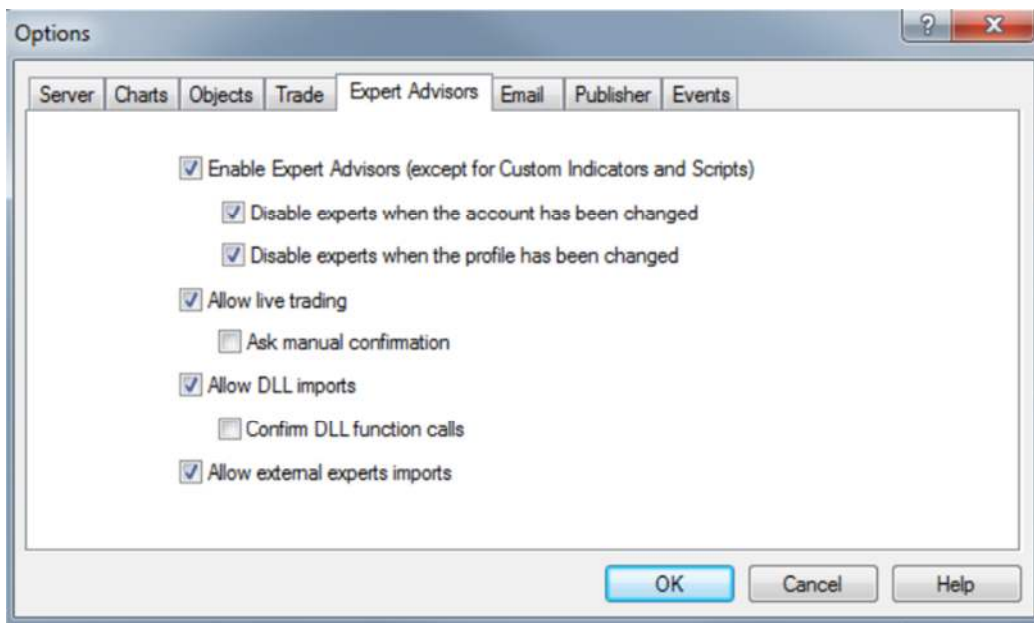
The following message will appear. Click **OK**



The Connect will open in a new window.

PLEASE NOTE: In order to use this feature, you must make sure that **Expert Advisors** is enabled.

You can do this by selecting **Tools** from the Main Menu and then selecting **Options**. Click on the **Expert Advisors** tab and make sure that the box which states “**Enable Expert Advisors**” is ticked. Then click on **OK**. (See below)



b. News button and Calendar button

From the buttons **News** and **Calendar** at the top you can switch between a general news feed and a feed where they are ordered by date as shown below:



- When you turn on the **News** button you can choose the news feed, add new feeds or filter the events by symbol.

In the sub menu **Time limit** you can choose the time frame you want to display news about, starting from the **Last 15 minutes** till **1 Week**.

The sub menu **Re-dock window** attaches the connect window to the MT4 chart where the tool is open.



a. Calendar button

When you turn on the **Calendar** button you can call the events from (**All dates**) within the last week, or you can call the events for a certain day only.

You can invoke the events according their importance from the sub menu **All impacts**. Here you are presented with options **Medium or High impact** and **High impact**.

By default all times on the calendar are in your computers local time.

Friday February 28th (All impacts) Timezone				
Friday February 28th				
	1.05am	Low	GBP	GfK Consumer Confidence
	1.15am	Low	JPY	Manufacturing PMI
	1.30am	Medium	JPY	Household Spending y/y
	1.30am	Medium	JPY	Tokyo Core CPI y/y
	1.30am	Low	JPY	National Core CPI y/y
	1.30am	Low	JPY	Unemployment Rate